

harmony®

3-in-1

Deluxe Potty

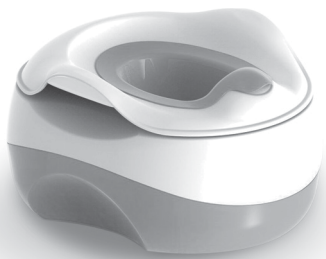
TRAINING TOILET FOR TODDLERS

FOR CHILDREN UP TO 23 KG (50 LBS.)

INSTRUCTION MANUAL

IMPORTANT! KEEP FOR FUTURE REFERENCE.

Please read the following instructions carefully.



IF YOU HAVE ANY PROBLEMS, PLEASE DO NOT RETURN THIS PRODUCT TO THE PLACE OF PURCHASE. PLEASE CONTACT HARMONY CUSTOMER SERVICE AT +44 (0) 1704 549881 OR AT WWW.HARMONYJUVENILE.COM

Adult assembly required.

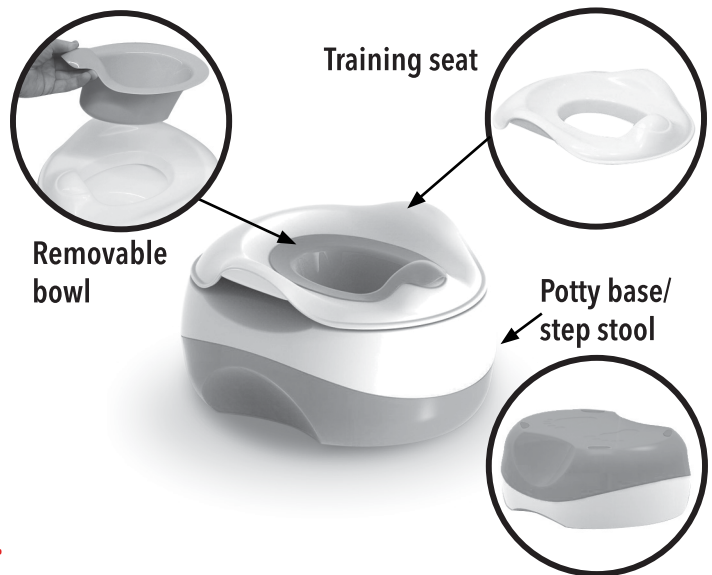
Maximum weight: 23 kg (50 lbs).

Child must be able to sit on and get off potty seat unassisted.
Keep small parts away from children.

⚠ WARNING:

- NEVER leave child unattended.
- Use ONLY on a flat surface.
- ENSURE product is level and stable.
- DO NOT use on elevated surface.
- NEVER lift or carry product with child on it.
- This product is not a toy. DO NOT allow children to play with it.
- DO NOT use this product in any way other than it was intended or described in the warnings and instructions.
- Discontinue use of product if damaged, broken, or disassembled.

PARTS



PREPARING POTTY FOR USE

- Remove content from box and discard all packaging.
- ! KEEP ALL PACKAGING AWAY FROM CHILDREN.

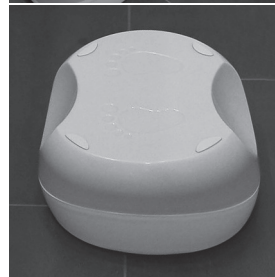
USING POTTY



Stand alone potty



Training seat



Step stool

CARE AND MAINTENANCE

- Wipe surface with a damp cloth or sponge, using mild soap and clean warm water. Towel dry.
- Check product before use. DO NOT use if any parts are missing, loose or damaged. Contact Harmony Juvenile Products for assistance.