



## **OPTYMA CAR SEAT**

### **INSTRUCTION MANUAL**



This child restraint complies with ECE regulations for use by children:

- Group I / II / III
- Mass: 9 – 18 kg with built-in harness
- Mass: 15 – 36 kg as high-back booster

### **READ THIS MANUAL**

Do not install or use this child restraint until you read and understand the instructions in this manual and in your vehicle owner's manual.

**FAILURE TO PROPERLY USE THIS CHILD RESTRAINT INCREASES THE RISK OF SERIOUS INJURY OR DEATH IN A SHARP TURN, SUDDEN STOP OR CRASH.**



**IF YOU HAVE ANY PROBLEMS, PLEASE DO NOT RETURN THIS PRODUCT TO THE PLACE OF PURCHASE. PLEASE CONTACT CUSTOMER SERVICE AT +44 (0) 1704 549881 OR AT [WWW.HARMONYJUVENILE.COM](http://WWW.HARMONYJUVENILE.COM)**

## TABLE OF CONTENTS

Registration information .....	3
If you need help.....	4
Warnings .....	4
General warnings .....	4
Usage warnings .....	6
Injury warnings .....	7
Vehicle warnings .....	8
Certifications .....	8
Airbag warnings .....	9
Damage warnings .....	10
Mass and height limitations .....	11
With built-in harness .....	11
Without built-in harness .....	12
Maximum height .....	12
Parts list .....	13
Vehicle seating positions .....	15
Safe vehicle seat belt systems .....	16
Unsafe vehicle seat belt systems .....	17
Assembling/disassembling backrest .....	18
Preparing child restraint for use .....	19
Adjusting harness shoulder straps .....	19
Headrest height adjustment.....	21
Installing with vehicle seat belt .....	21
Using child restraint with built-in harness .....	23
Securing child in child restraint .....	23
Removing child from child restraint .....	25
Using child restraint in booster mode (without internal harness) .....	25
Removing/installing harness .....	25
Removing the crotch buckle .....	27
Preparing booster seat for use .....	28
Securing child and booster seat in vehicle .....	29
Installation - booster seat .....	30
Using cup holder (when applicable) .....	32
Aircraft installation .....	32
Instruction manual storage .....	32
Removing/installing fabric seat cover .....	33
Care and maintenance .....	33
Warranty .....	34

## REGISTRATION INFORMATION

**REGISTER YOUR CHILD RESTRAINT TODAY!** Child restraints could be recalled for safety reasons. You must register this restraint to be reached in a recall, and to be eligible to receive replacement parts while under warranty.

The model number, serial number and manufacturing date can be found on a label on the underside of the child restraint.

**Visit [www.harmonyjuvenile.com/register](http://www.harmonyjuvenile.com/register) to register your child restraint online, mail-in the registration card or send your name, address, the restraint's model number, manufacturing date and date of purchase to:**

**Harmony Juvenile Products UK  
10 Beach Priory Gdns.  
Southport, UK  
PR8 1RT**

**or call: +44 (0) 1704 549881**

For recall information, any questions you may have, or to make a change of address or contact information please call Customer Service at +44 (0) 1704 549881 or visit us online at **[www.harmonyjuvenile.com](http://www.harmonyjuvenile.com)**.

**PLEASE DO NOT SEND IN YOUR  
REGISTRATION CARD IF YOU HAVE  
REGISTERED YOUR RESTRAINT ONLINE.**

## IF YOU NEED HELP

Please fill in the information below for future reference. The model number and manufacturing date can be found on a label on the underside of the child restraint.

**Model Number:** \_\_\_\_\_

**Manufacture Date:** \_\_\_\_\_

**Date of Purchase:** \_\_\_\_\_

Our Customer Service Department is standing by to help you with any questions or concerns you may have regarding installation, use, care and/or parts. Please have your product's model number and manufacturing date available when contacting us.

## WARNINGS

### GENERAL WARNINGS



## WARNING!

The safety of your child and the effectiveness of this child restraint depend on:

1. **Selecting a suitable location** for the child restraint in your vehicle.
2. **Properly routing the vehicle seat belt.**
3. **Properly securing both your child and the child restraint in the vehicle** using a seat belt designed to restrain both the child restraint and your child. Many seat belts are **NOT** safe to use with this child restraint. Please review the sections "Safe/Unsafe vehicle seat belt systems" carefully. If in doubt about installing this child restraint, consult the vehicle owner's manual or call the Harmony Customer Service Department.



# WARNING!

**FAILURE TO PROPERLY READ, FOLLOW AND USE THESE INSTRUCTIONS AND THE CHILD RESTRAINT LABELS INCREASES THE RISK OF SERIOUS INJURY OR DEATH IN A SHARP TURN, SUDDEN STOP OR CRASH.** Your child's safety depends on the proper installation and use of this child restraint. Even if this child restraint seems easy to install and use, it is **VERY IMPORTANT** to read and understand these instructions and the vehicle owner's manual.

Follow all labels on this child restraint and in these written instructions. **DO NOT INSTALL OR USE THIS CHILD RESTRAINT UNTIL YOU READ AND UNDERSTAND THE INSTRUCTIONS IN THIS MANUAL AND IN YOUR VEHICLE OWNER'S MANUAL.**

**NO CHILD RESTRAINT CAN GUARANTEE PROTECTION WHEN THE VEHICLE IS SERIOUSLY IMPACTED.** However, when correctly installed, a child restraint will substantially improve the chances for survival and reduce the risk of serious injury in most crashes.

Carefully follow the instructions in this manual and in your vehicle owner's manual. If there is a discrepancy between the two, the vehicle owner's manual must take precedence with regards to seat belts and/or airbags.

**! ADULT ASSEMBLY REQUIRED.**

**! USE THIS CHILD RESTRAINT FORWARD-FACING ONLY.**

**! DO NOT USE THIS CHILD RESTRAINT** without properly assembling it.

**! DO NOT** allow children to play with this child restraint.

**! NEVER** leave children alone in a vehicle under any circumstance.

**!** It is recommended that children are not left in their child restraint system unattended.

**!** Set a good example by **ALWAYS** wearing your seat

belt. Make it a firm rule that the vehicle does not move until everyone is buckled up. **MAKE NO EXCEPTIONS.**

- ! Harmony Juvenile Products advises against loaning or passing along a child restraint. **DO NOT USE A SECOND-HAND CHILD RESTRAINT** or a child restraint whose history you do not know.
- ! When disposing a child restraint system, ensure to dispose of the unit in a way others cannot reuse it (e.g. use a dark trash bag, do not sell to a thrift shop or in a garage sale, etc.).
- ! Store the child restraint in a safe place when not in use. **DO NOT** place heavy objects on top of the child restraint while in storage.
- ! **DO NOT** remove any stickers or warnings as they contain important information.

## USAGE WARNINGS



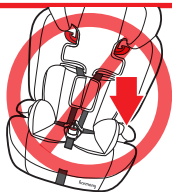
# WARNING!

! **ALWAYS** ASSIST YOUR CHILD WHEN GETTING INTO AND OUT OF THE CHILD RESTRAINT.

! **NEVER** LET YOUR CHILD LEAN ON THE ARMREST WHEN GETTING INTO OR EXITING THE BOOSTER SEAT TO PREVENT THE SEAT FROM TIPPING.

! **ENSURE** THAT THE CHILD RESTRAINT IS LEVEL, STABLE AND DOES NOT ROCK SIDE-TO-SIDE. IF THE CHILD RESTRAINT IS NOT STABLE, TRY ANOTHER SEATING LOCATION.

! **DO NOT ADD ANYTHING BEHIND OR UNDER THE CHILD RESTRAINT.**



According to accident statistics, **CHILDREN ARE SAFER WHEN PROPERLY RESTRAINED IN THE REAR SEATING POSITIONS THAN IN THE FRONT SEATING POSITION.**

Please study the section “Vehicle seating positions”.

- ! **DO NOT** use any load bearing contact points other than those described in the instructions and marked in the child restraint.
- ! **DO NOT** allow others to install or use this child restraint unless they read and understand all the instructions and labels.
- ! **DO NOT GIVE THIS CHILD RESTRAINT** to someone else without also giving them this instruction manual. Additional instruction manuals can be downloaded directly from [www.harmonyjuvenile.com](http://www.harmonyjuvenile.com).
- ! To ensure proper child restraint use, keep and store this instruction manual and refer to it when necessary.
- ! **DO NOT LEAVE A CHILD RESTRAINT UNSECURED IN YOUR VEHICLE.** In a collision, sharp turn or sudden stop, an unsecured child restraint can injure other occupants. Remove it or make sure that it is securely attached with the vehicle seat belt, even when not in use.

## INJURY WARNINGS

- ! **INJURIES MAY OCCUR EVEN IF YOU ARE NOT IN A CRASH** if the child restraint is not properly installed or if your child is not properly secured in the child restraint.
- ! The rigid items and plastic parts of a child restraint shall be so located and installed that they are not liable, during everyday use of the vehicle, to become trapped by a movable seat or in a door of the vehicle.
- ! **DO NOT** leave folding vehicle seats unlatched. In the event of a sharp turn, sudden stop or crash, a loose seat back could prevent the child restraint from protecting the child as well as it should.
- ! It is recommended that any luggage or other objects liable to cause injuries in the event of a collision shall be properly secured. In the event of a sharp turn,

sudden stop or crash, loose objects will keep moving, potentially causing serious injuries.

- ! The child restraint shall not be used without the cover. It **MUST** always be used with the fabric cover provided by the manufacturer.
- ! The seat cover should not be replaced with any other than the one recommended by the manufacturer, because the cover constitutes an integral part of the restraint performance.
- ! **PARTS OF THE CHILD RESTRAINT COULD BECOME HOT ENOUGH TO BURN THE CHILD IF LEFT IN THE SUN.** Contact with these parts can injure your child. **ALWAYS** touch the surface of any metal or plastic parts before putting your child in the child restraint. Cover the child restraint with a towel or blanket when the vehicle is parked in direct sunlight. **KEEP AWAY FROM SUNLIGHT, OTHERWISE IT MAY BE TOO HOT FOR THE CHILD'S SKIN.**

## VEHICLE WARNINGS

- ! **DO NOT** use this child restraint with 2-point vehicle belts (lap-belt only or shoulder-belt only). Your child would be seriously injured in the event of a crash.
- ! **DO NOT** use this child restraint with unsafe vehicle seat belts listed in section “Unsafe vehicle seat belt systems” of this manual.
- ! **DO NOT** use this child restraint if it can't be properly installed. It is possible that your vehicle has no suitable seating position for this child restraint due to seat belt type, airbag system and/or lack of location of a tether strap anchor. Read and follow these instructions, and your vehicle owner's manual carefully.

## CERTIFICATIONS

This is a “Universal” child restraint when installed using the 3-point vehicle seat belt only. It is approved to the



requirements of the European Standard for Child Safety Seat Equipment under Regulation No. 44, 04 series of amendments, for general use in vehicles and it will fit most, but not all, car seats.

A correct fit is likely if the vehicle manufacturer has declared in the vehicle handbook that the vehicle is capable of accepting a “Universal” child restraint for this age group.

This child restraint has been classified as “Universal” under more stringent conditions than those which applied to earlier designs which do not carry this notice.

If in doubt, consult either the child restraint manufacturer or the retailer.

**!** Only suitable for use in the listed vehicles fitted with 3-point with retractor safety-belts, approved to ECE Regulation No. 16 or other equivalent standards.

This restraint is **NOT CERTIFIED** for aircraft use.

This child restraint must **NOT** be used in homes, boats, buses, motorcycles, motor homes, or any other vehicles that have non-forward-facing seats, missing seat belts, or whose seat belts do not meet the requirements of this child restraint.

## AIRBAG WARNINGS

**! NEVER PLACE THIS CHILD RESTRAINT IN A VEHICLE SEATING LOCATION THAT HAS AN ACTIVE FRONTAL AIRBAG.** An inflating airbag may cause serious injury or death. Refer to your vehicle owner’s manual for information about airbags and child restraint installation.

This child restraint may be used in a rear seating position equipped with side impact airbags providing they are:

- Roof mounted;
- “Curtain” type deployment;
- Will **NOT** interfere with, impact or in any way reposition the child restraint when inflated.

! If a vehicle's front seat location must be used, **ALWAYS** disable the airbag. Failure to disable the airbag system can result in serious injury or death. Follow the vehicle owner's manual for instructions on disabling the front airbag system.

Please refer to your vehicle owner's manual for airbag type, and for appropriate use with child restraints.

## DAMAGE WARNINGS

! It is recommended that the device should be changed when it has been subject to violent stresses in an accident.

! **DO NOT USE A CHILD RESTRAINT THAT HAS BEEN IN AN ACCIDENT OF ANY KIND.** An accident can cause damage to the child restraint that you cannot see.

! **DO NOT** use this child restraint if it is damaged in any way or has missing parts.

! **NEVER** use a cut, frayed or damaged vehicle seat belt or harness.

! **DO NOT** tamper with or modify the child restraint, for any reason. Any unauthorised or additions to the device without the approval of the Type Approval Authority can cause serious injury or death in a sharp turn, sudden stop, or crash.

! **DO NOT** use anything to raise the child restraint off the vehicle seat. Untested modifications, such as adding extra padding, could affect the safety of the child restraint and result in serious injury or death in a crash.

! **DO NOT, EXCEPT AS DESCRIBED IN THESE INSTRUCTIONS, MODIFY YOUR CHILD RESTRAINT, DISASSEMBLE ANY PART OR CHANGE THE WAY THE VEHICLE SEAT BELTS ARE USED.** This includes any accessories or parts by other manufacturers as non-tested accessories can affect the safety of the child restraint.

## MASS AND HEIGHT LIMITATIONS

# **WARNING!**

**THIS CHILD RESTRAINT HAS DIFFERENCES IN INSTALLATION AND USAGE DEPENDING ON THE WEIGHT AND HEIGHT OF YOUR CHILD. FAILURE TO USE THIS CHILD RESTRAINT WITHIN THESE GUIDELINES MAY INCREASE THE RISK OF SERIOUS INJURY OR DEATH.**

**! WARNING:** Verify your child's height and weight frequently. **DO NOT** guess before choosing the proper setup for your child.

Harmony Juvenile Products recommends that you **ALWAYS** confirm country laws with local authorities. Laws vary from country to country regarding minimum/maximum child restraint requirements for age, mass and height.

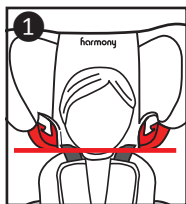
## WITH BUILT-IN HARNESS

To use this child restraint, your child **MUST MEET ALL** of the following requirements:

- **GROUP I**

**Forward-facing with built-in harness:**  
between 9 - 18 kg  
(20 - 39.6 lbs.)

- Shoulders are **BELOW** top harness slots **1**.
- Child's ears **MUST BE BELOW** top of the headrest. If tops of ears are above the top of the headrest at its maximum height, the child is too large for the child restraint **2**.



## WITHOUT BUILT-IN HARNESS

To use this child restraint, your child **MUST MEET ALL** of the following requirements:

- **GROUP II / III**  
**Forward-facing with backrest:**  
between 15 - 36 kg  
(33 - 79 lbs.)



- Shoulder belt **MUST** lie across the **MIDDLE** of the child's shoulder and chest, and lap portion **MUST** be positioned low across child's hips **1**.



- Child's ears **MUST BE BELOW** top of booster seat headrest at its maximum height. If tops of ears are above the top of the headrest at its maximum height, the child is too large for the booster seat **2**.

## MAXIMUM HEIGHT



## WARNING!

Child is too tall when top of ears (mid-point of child's head) are above the top of the child restraint/booster seat headrest at its maximum height.



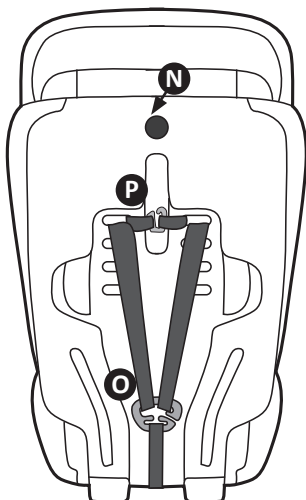
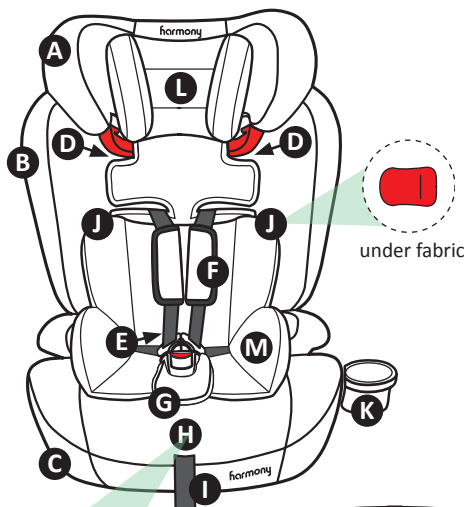
## **PARTS LIST**

- A. Headrest fabric cover (pre-installed)**
- B. Backrest fabric cover (pre-installed)**
- C. Base fabric cover (pre-installed)**
- D. Shoulder belt positioning guides**
- E. Harness straps, buckle and clips**
- F. Shoulder pads**
- G. Crotch strap and pad**
- H. Metal up-front harness adjustment button  
(under fabric seat pad)**
- I. Up-front harness adjustment strap  
(under fabric seat pad)**
- J. Seat belt installation guides  
(under fabric, when applicable)**
- K. Cup holder (when applicable)**
- L. Head insert cushion (when applicable)**
- M. Body insert cushion (when applicable)**
- N. Headrest height adjustment button**
- O. Harness splitter plate**
- P. Shoulder pad splitter plate**

### **TO PURCHASE REPLACEMENT PARTS:**

In the United Kingdom, please contact us at  
[www.harmonyjuvenile.com](http://www.harmonyjuvenile.com)  
or by calling +44 (0) 1704 549881.

# PARTS LIST



## VEHICLE SEATING POSITIONS

### **WARNING!**

**FAILURE TO PROPERLY SECURE YOUR CHILD AND THE CHILD RESTRAINT IN YOUR VEHICLE INCREASES THE RISK OF SERIOUS INJURY OR DEATH IN THE EVENT OF A SHARP TURN, SUDDEN STOP OR CRASH.**

### **WARNING!**

**IMPROPER PLACEMENT OF THE CHILD RESTRAINT INCREASES THE RISK OF SERIOUS INJURY OR DEATH.**

Some seating positions in your vehicle may **NOT** be safe for this child restraint. Some vehicles have **NO** seating positions which are compatible with this child restraint due to seating surface, seat belt type and/or airbag system. Read and follow these instructions, and your vehicle owner's manual carefully.

### **WARNING!**

Children aged 13 and under **MUST** ride in the rear seats, away from front airbags. The only exception is if the airbags are turned off. When using a child restraint in a vehicle with active airbags, refer to the vehicle owner's manual for additional installation instructions and precautions. For rear seat installation, adjust the front seat forward enough to ensure the child's feet do not hit the backrest of the front seat.



### **WARNING!**

Only use this child restraint in forward-facing vehicle seats. Side-facing or rear-facing seats in vans, station wagons or trucks **CANNOT** be used.

**THE VEHICLE SEAT MUST FACE FORWARD. DO NOT** use the child restraint with the following vehicle seats:

- Seats which face sides of vehicle.
- Seats which face rear of vehicle.
- Rear seats of small extended cab pickup trucks.



- The front of the child restraint **MUST NOT** hang over the edge of the vehicle seat by more than 5 cm (2 inches).

Refer to the vehicle owner's manual for child restraint installation instructions for your specific vehicle.



**! DO NOT** use this child restraint in a seating position where the vehicle seat belt or seat belt buckle is not easily accessible with the child restraint secured in place.

## SAFE VEHICLE SEAT BELT SYSTEMS



# WARNING!

**SEAT BELTS DIFFER FROM VEHICLE TO VEHICLE AND FROM SEATING LOCATION TO SEATING LOCATION WITHIN THE SAME VEHICLE. NOT ALL VEHICLE SEAT BELTS CAN BE USED WITH THIS CHILD RESTRAINT.**

You must determine if your vehicle's seat belts are compatible for use with this child restraint. If you are unsure, consult your vehicle owner's manual or call Harmony Juvenile Products.

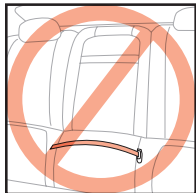
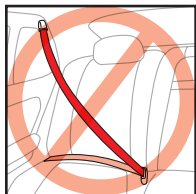
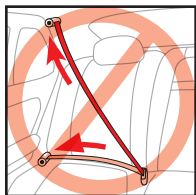
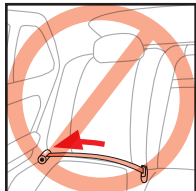
**!** This child restraint is suitable for use in the listed vehicles fitted with 3-point with retractor safety-belts (lap-and-shoulder), approved to ECE Regulation No. 16 or other equivalent standards.



Review your vehicle owner's manual for vehicle seat belt use with child restraints.

## UNSAFE VEHICLE SEAT BELT SYSTEMS

This child restraint can be installed properly using **MOST** vehicle 3-point lap-and-shoulder seat belts. However, some vehicle seat belts are not safe to use as their anchoring points for the lap belt may not allow for a secure installation. **NEVER** use any unsafe vehicle seat belt systems.

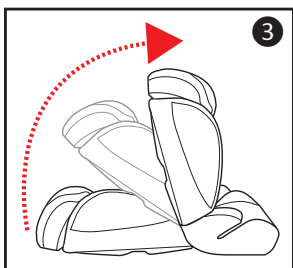
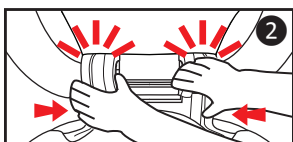
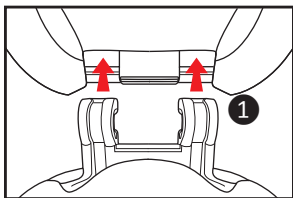


**DO NOT USE ANY OF THE FOLLOWING VEHICLE SEAT BELT SYSTEMS WITH THIS CHILD RESTRAINT:**

- ! NEVER** use a lap-only belt.
- ! NEVER** use a seat belt that does not lock in the event of a sharp turn, sudden stop, or crash.
- ! NEVER** use a cut, frayed or damaged vehicle seat belt.
- ! NEVER** use motor driven automatic seat belts.
- ! NEVER** use a vehicle seat belt system where the lap and shoulder belts have independent retractors.
- ! NEVER** use a vehicle seat belt system with top or bottom anchorage points attached to the door in any way.
- ! NEVER** use lap belts whose anchor points are forward of the seat crease.

## ASSEMBLING/DISASSEMBLING BACKREST

1. Insert 'U-Shape' plastic hooks on bottom of backrest into the corresponding bars on seat base ①.
2. Apply a small amount of force to gently lock the hooks onto the base ②.
3. Slowly swing the backrest upwards, whereby locking the backrest into place ③.
4. To remove backrest, repeat previous steps in reverse order.

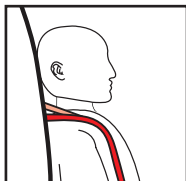


## PREPARING CHILD RESTRAINT FOR USE

# WARNING!

**INCORRECT USE OF THE HARNESS SYSTEM IS THE MOST COMMON MISTAKE PEOPLE MAKE. IT IS VERY IMPORTANT TO READ, UNDERSTAND AND FOLLOW ALL INSTRUCTIONS AND WARNINGS. DO NOT MISTAKE COMFORT FOR SAFETY. THE HARNESS SYSTEM MUST BE SNUGLY ADJUSTED AT ALL TIMES.**

**! WARNING:** The shoulder harness must be **EVEN OR SLIGHTLY ABOVE** the child's shoulders. If the upper most harness position is below the child's shoulders, **DO NOT** use this child restraint with harness.



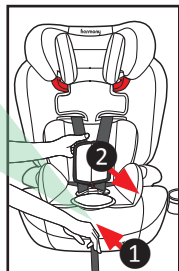
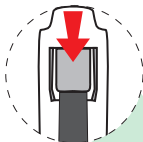
**! ENSURE** the harness height is correct for your child's size. **VERIFY OFTEN.**

**! WARNING:** **DO NOT** use this child restraint if the midpoint of your child's head is above the top of the child restraint's headrest at its maximum height.



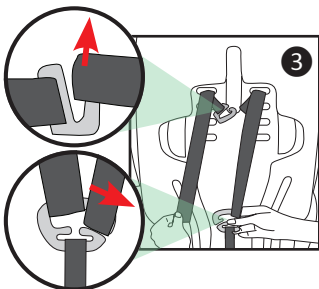
## ADJUSTING HARNESS SHOULDER STRAPS

1. Loosen harness system by pushing the up-front metal harness adjuster at the front of the seat just above the adjustment strap (under the fabric) **1** and by simultaneously pulling the chest strap towards you **2**.



**TIP: PULL ON THE HARNESS STRAPS. DO NOT PULL ON THE HARNESS PADS AS THEY ARE LOCKED IN PLACE.**

2. Face the rear of the child restraint and remove the harness straps and shoulder straps from the splitter plates (see “Removing/installing harness”) **3**.



3. Gently pull the straps out from the front harness slots.
4. Select the proper harness slot height and feed the straps (harness and shoulder pads) back through. **ENSURE THAT THE HARNESS STRAPS ARE THREADED AT THE SAME LEVEL, ARE NOT TWISTED AND ARE IN THE CORRECT SLOTS.**
5. Reattach the harness straps and shoulder straps to the metal splitter plates.

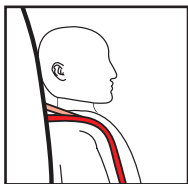
**! ENSURE BOTH HARNESS STRAPS ARE PROPERLY SECURED ON THE SPLITTER PLATE.**



## **WARNING!**

**FAILURE TO REINSTALL THE HARNESS STRAPS CORRECTLY COULD RESULT IN SERIOUS INJURY OR DEATH.**

**REMEMBER** to check the shoulder straps position frequently and move them to the next position when necessary. The harness straps **MUST** be in the height position **EVEN WITH** or just **ABOVE** the shoulders. The harness pads and crotch pads are optional and are not a safety feature.

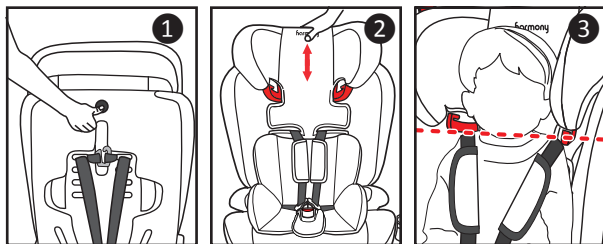


## HEADREST HEIGHT ADJUSTMENT

Your child restraint has seven (7) height adjustments.

- Use one hand to press the headrest adjustment button found on the back of the seat **1** while simultaneously pulling the headrest up or down to the desired height with the other hand **2**.

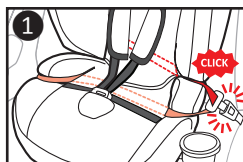
Adjust headrest height so that the bottom of the headrest is **EVEN** with the top of the child's shoulders **3**.



## INSTALLING WITH VEHICLE SEAT BELT

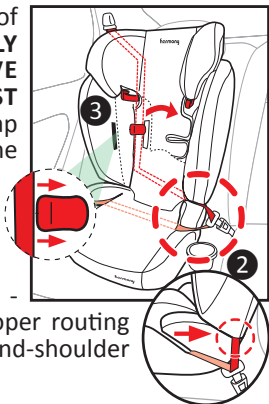
1. Place the child restraint flush against a forward-facing vehicle seat. The vehicle seat **MUST** be equipped with a 3-point lap-and-shoulder belt. The child restraint must be level, stable and not rock side-to-side (see "Vehicle seating positions").
2. Loosen the harness system. Pass the vehicle seat belt behind the harness system over the base of the unit as shown and buckle the vehicle seat belt. Listen for an audible "click". The vehicle seat belt **MUST NOT** be twisted.

3. Lift the back portion of the Base Seat Pad and place the lap portion of the vehicle seat belt **FLAT** against the plastic base **1**. **ENSURE**

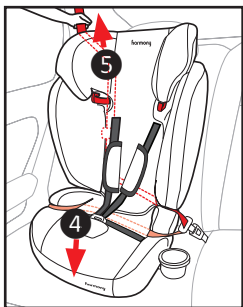


that the shoulder portion of the vehicle seat belt is **FULLY INSERTED IN THE GROOVE BETWEEN THE BACKREST AND BASE** and the lap portion is placed under the armrest ②.

4. While lifting the backrest pad, guide the shoulder belt into the Seat Belt Installation Guide (Parts list - 'J'). See illustrations for proper routing path of the 3-point lap-and-shoulder belt ③.



5. If your vehicle is equipped with a ELR/ALR switchable seat belt retractor system, we recommend that you pull out the full length of the vehicle seat belt (until you cannot pull out any more slack). This locks the retractor. If not equipped with switchable ELR/ALR retractor, continue with step #6.
6. Tighten vehicle seat belt by placing your knee on the child restraint base and use your full weight to push the child restraint down ④ as you simultaneously release the extra seat belt length until seat belt is taught and has no slack ⑤.



For more information on how to tighten the seat belt for your seat belt system, see your vehicle owner's manual.

## USING CHILD RESTRAINT WITH BUILT-IN HARNESS



# WARNING!

**FAILURE TO FASTEN AND TIGHTEN THE HARNESS SYSTEM CORRECTLY MAY CAUSE THE CHILD TO BE EJECTED FROM THE RESTRAINT SYSTEM IN CASE OF A SHARP TURN, SUDDEN STOP OR CRASH CAUSING SERIOUS INJURY OR DEATH.** In a crash, the child restraint will provide **NO** protection for your child unless the harness straps are properly secured. **DO NOT** mistake comfort for safety. Harness system **MUST** be snugly adjusted. Follow these instructions carefully.

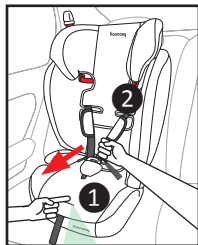
- ! Incorrect use of the harness system is the most common mistake people make. It is **VERY** important to read, understand and follow **ALL** instructions and warnings. **DO NOT** mistake comfort for safety. The harness system **MUST** be snugly adjusted at all times.
- ! Snugly adjust the harness provided with this child restraint around your child. A snug strap is one with no slack. It should not press on the child's flesh or cause your child's body to be in an unnatural position. You should only be able to slide **ONE FINGER** between the shoulder straps and the child's shoulder.
- ! Avoid unnecessary bulky clothing.

## SECURING CHILD IN CHILD RESTRAINT

1. To loosen the harness strap: Push the up-front metal harness adjuster at the front of the seat just **ABOVE** the adjustment strap (under the fabric) **1** and simultaneously pull the chest strap towards you **2**.

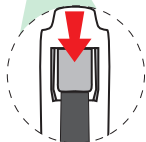
**TIP: PULL ON THE HARNESS STRAPS. DO NOT PULL ON THE HARNESS PADS AS THEY ARE LOCKED IN PLACE.**

2. Unbuckle harness straps by pressing on the **RED** buckle release button and by pulling the buckle clips out **3**. Move harness straps to the side.



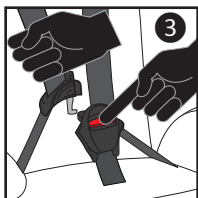
3. Place child in child restraint with child's back flat against back of the backrest.

4. Adjust headrest height so that the bottom of the headrest is even with the top of the child's shoulders.

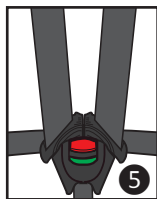
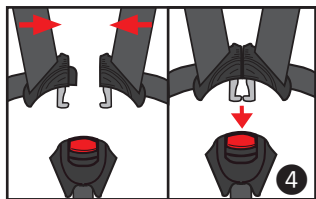


5. Place harness straps over child's shoulders and insert the two-piece buckle clip into buckle until they 'click' into place **4**.

**! ENSURE** that the buckle is properly fastened by gently tugging on it and that the colour indicator has turned to **GREEN** **5**.



**! ENSURE** that the straps are **NOT** twisted.



**! DO NOT** use child restraint if harness does not lock.

6. Tighten harness system by gently pulling on the up-front harness adjuster strap until all slack is removed from the system **6**.



**! ENSURE** straps are flat and snug against child's shoulders and thighs. You should **NOT** be able to slide more than one finger between the strap and the child's shoulder **7**.

A snug strap should not allow any slack. It lies in a relatively straight line without sagging. It should not press the child's flesh or cause your child's body to be in an unnatural position.

**!** Any straps holding the restraint to the vehicle should be tight, any straps restraining the child should be adjusted to the child's body, and all straps should not be twisted.



## REMOVING CHILD FROM CHILD RESTRAINT

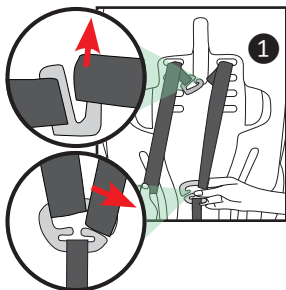
1. Loosen the harness system by pressing on the up-front metal harness adjuster (under the fabric), and simultaneously pulling the shoulder straps towards you.
2. Unbuckle harness by pressing on the **RED** buckle release button.

## USING CHILD RESTRAINT IN BOOSTER MODE (WITHOUT INTERNAL HARNESS)

### REMOVING/INSTALLING HARNESS

1. Keep the harness buckled. Loosen the harness system by pressing on the up-front metal harness adjuster (under the fabric), and simultaneously pulling the shoulder straps towards you.

2. Face the rear of the child restraint and remove the harness straps and shoulder straps from the splitter plates ①.

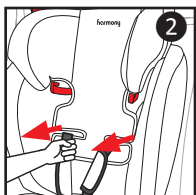


3. Pull the harness straps out of their respective slots in the backrest ② and remove shoulder pads.

4. Continue to thread the harness strap through the plastic base and completely remove it ③.

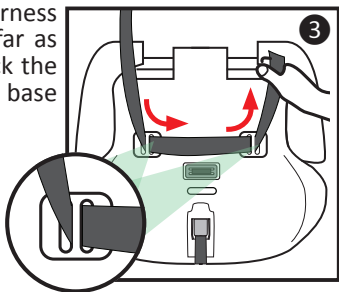
5. Store complete harness system for future use.

6. To remove the crotch buckle, please see section "Removing the crotch buckle".

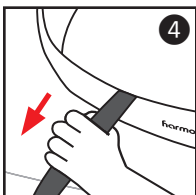


7. Pull the up-front harness adjustment strap as far as it will go. This will lock the splitter plate into the base of the seat ④.

8. Roll strap tightly, secure roll with an elastic band and store rolled strap under the fabric seat pad in the opening of the up-front adjuster.



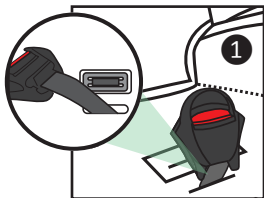
To reinstall, reverse the above steps.



## REMOVING THE CROTCH BUCKLE

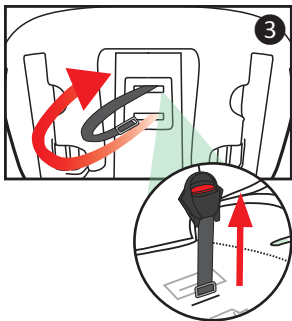
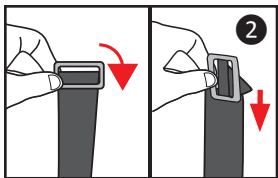
To remove the crotch buckle:

1. Remove fabric crotch pad.
2. Push the buckle down through the fabric seat pad towards the plastic base of the child restraint.
3. Lift the fabric seat pad on the base of the child restraint to expose the buckle and slot ①.
4. Turn the metal plate so that it can slide through the opening in the plastic base ②. Continue to thread the crotch strap through the plastic base and completely remove it ③.



The buckle **MUST** be looped back through the seat base as shown ①.

**! ENSURE** that the strap is **COMPLETELY** in the slot and the crotch strap is **NOT** twisted.



# WARNING!

FAILURE TO REINSTALL THE CROTCH STRAP CORRECTLY COULD RESULT IN SERIOUS INJURY OR DEATH.

5. Replace fabric seat pad and fabric crotch pad.

**! ENSURE** that the buckle is facing **FORWARD** 4.



## PREPARING BOOSTER SEAT FOR USE



# WARNING!

**INCORRECT USE OF THE VEHICLE'S 3-POINT LAP-AND-SHOULDER SEAT BELT SYSTEM IS THE MOST COMMON MISTAKE PEOPLE MAKE. IT IS VERY IMPORTANT TO READ, UNDERSTAND AND FOLLOW ALL INSTRUCTIONS AND WARNINGS. DO NOT MISTAKE COMFORT FOR SAFETY. THE VEHICLE'S 3-POINT LAP-AND-SHOULDER SEAT BELT MUST BE SNUGLY ADJUSTED AT ALL TIMES.**

**! ENSURE** the vehicle shoulder belt's position is correct for your child's size. **VERIFY OFTEN.**

**! WARNING: DO NOT** use this booster seat if the midpoint of your child's head is above the top of the booster seat headrest at its maximum height.



# **WARNING!**

**FAILURE TO PROPERLY SECURE YOUR CHILD IN THE BOOSTER SEAT INCREASES THE RISK OF SERIOUS INJURY OR DEATH IN THE EVENT OF A SHARP TURN, SUDDEN STOP OR CRASH.** In a crash, the booster seat provides **NO** protection for your child unless the vehicle 3-point lap-and-shoulder belt is properly secured. Follow these instructions carefully to properly secure your child.

**! WARNING:** You **MUST** use the vehicle 3-point lap-and-shoulder belt system when restraining the child in the booster seat **1**.



**! WARNING:** Vehicle belts **MUST** be tight, adjusted to the child's body, and should not be twisted **1**.

**! NEVER** use a vehicle lap-only belt to secure child in booster seat **2**.



**! NEVER USE A LOOSE SHOULDER BELT.**

**! NEVER** position the shoulder belt under the child's arm **3** or place the shoulder belt behind the child's back **4**.



**! Lap portion of lap-and-shoulder belt MUST be low and snug across the hips, with the pelvis firmly engaged, just touching the child's thighs.** The lap portion **MUST NOT** be lying across the child's stomach as this can cause major injuries to the child in case of a sharp turn, sudden stop or crash.

**! DO NOT** allow the child to slouch, slide down in the seat, or create slack in the belt system ⑤. If child will not keep vehicle belt properly positioned, **DO NOT** use this booster seat.



**! DO NOT** position vehicle belt over top of the armrests ⑥.

**! The** vehicle seat headrest should not create a gap between vehicle seat and booster seat ⑦. If so, remove the vehicle headrest.

**! DO NOT** use any load bearing contact points other than those described in the instructions and marked in the child restraint.



**IF IN DOUBT ABOUT THESE POINTS OR ANY QUESTIONS RELATED TO INSTALLATION, PLEASE CONTACT HARMONY JUVENILE PRODUCTS.**

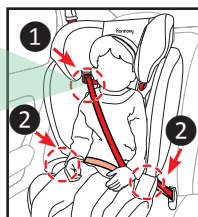
## INSTALLATION - BOOSTER SEAT

### **WARNING!**

**DUE TO VARYING ANGLES OF VEHICLE SEAT BELT RETRACTORS, EXCESS SLACK IN THE VEHICLE BELT SYSTEM MIGHT NOT BE REMOVED AUTOMATICALLY. Once the lap and shoulder portions of the seat belt are properly positioned and the buckle is attached, FEED ANY REMAINING SLACK OF THE SEAT BELT MANUALLY BACK INTO THE RETRACTOR TO TIGHTEN THE WHOLE SYSTEM.**

1. Place child in the booster seat with child's back flat against the back of the booster seat.

2. Thread shoulder belt portion of the 3-point lap-and-shoulder belt system through the shoulder belt guide



① and ensure that shoulder belt lies across child's shoulder and chest, and **NOT** across child's face or neck.

3. Thread both sides of the lap belt and the lower end of the shoulder belt of the 3-point lap-and-shoulder belt system **UNDER BOTH** booster seat armrests ② and ensure that the belt is snug across child's hips. It is important to ensure that any lap strap is worn low down, so that the pelvis is firmly engaged, just touching their thighs and is **NOT** across their stomach.

4. Buckle the vehicle seat belt into place and ensure it is secure by gently pulling on it.

**! BOTH SIDES OF THE LAP BELT AND THE LOWER END OF THE SHOULDER BELT MUST PASS UNDER BOTH ARMRESTS.**

**!** Any straps holding the restraint to the vehicle should be tight, any straps restraining the child should be adjusted to the child's body, and all straps should not be twisted.

**!** Teach your child that seat belts are not toys and should **NEVER** be played with, regardless of whether the car is in motion or not.

**!** **ALWAYS** be aware of what your children are doing in the back seat.

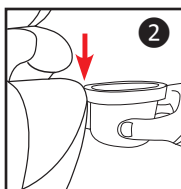
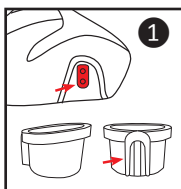
## USING CUP HOLDER (WHEN APPLICABLE)

### TO INSTALL:

1. Slide cup holder into place over cup holder clip **1** **2** on either side until locked in place.

### TO REMOVE:

1. Pull cup holder up and outward.

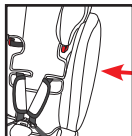


## AIRCRAFT INSTALLATION

This child restraint is **NOT CERTIFIED** for aircraft use. Aircraft seats are not equipped with 3-point lap-and-shoulder belts which are required for use with this child restraint.

## INSTRUCTION MANUAL STORAGE

We recommend that you store your instruction manual under the fabric on the side of the child restraint.





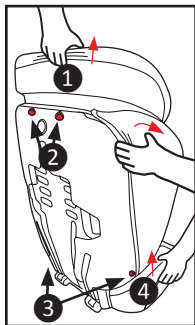
## REMOVING/INSTALLING FABRIC SEAT COVER

### Headrest:

Gently pull the elastic sides up and over the headrest ①.

### Backrest:

- Remove the harness (see “Removing/installing harness”).
- Unhook the elastic loops found at the top (x2) ② and bottom (x2) ③ of the backrest. Gently slide the pad downwards and remove.



### Base:

Gently pull the elastic sides of seat pad up and over the cup holder bracket and remove ④.

### TO INSTALL:

To reinstall fabric pads, repeat previous steps in reverse order.

## CARE AND MAINTENANCE

### CLEANING YOUR SEAT PAD:

- **MACHINE WASH SEPARATELY** using cold water - delicate cycle.
- **DO NOT BLEACH.**
- **DRIP DRY** to prevent cover from shrinking.

### CLEANING THE PLASTIC SHELL:

- **SPONGE CLEAN** using warm water and mild soap.
- **TOWEL DRY.**
- **DO NOT** use solvents, abrasive cleaners, or disassemble child restraint in any way, except as instructed.

### CLEANING HARNESS STRAPS:

- Spot clean with a damp cloth. **DO NOT BLEACH.** **DO NOT** immerse the straps in water. Doing so may weaken the straps.

## CLEANING METAL AND PLASTIC HARNESS PARTS:

- Use mild soap and cool water on a damp cloth.

**! NEVER** lubricate the buckle. If buckle or harness adjuster sticks or will not remain tight, check for foreign objects such as food, dirt, etc. Remove objects with tweezers and/or clean with a cotton swab. If you cannot get the harness to remain tight with the buckle securely locked, **DO NOT USE** this child restraint. Call Harmony Juvenile Products to purchase a replacement harness or buckle.

## WARRANTY

This child restraint was manufactured by Harmony® Juvenile Products (HJP). HJP warrants this product to the original retail purchaser as follows:

### LIMITED 2-YEAR WARRANTY

The following warranty conditions only apply to the country in which this product was first sold through retail channels to a consumer.

This child restraint is warranted against defective materials and workmanship for 2 years from the date of original purchase. *An original receipt is required to validate your warranty.* HJP will, at its option, provide replacement parts for this product or replace this product. HJP reserves the right to discontinue or change fabrics, parts, models or products, or to make substitutions.

To make a claim under this warranty, you must contact HJP Customer Service at **[www.harmonyjuvenile.com](http://www.harmonyjuvenile.com)**, or call +44 (0) 1704 549881, or write to 10 Beach Priory Gdns., Southport, UK, PR8 1RT.

Proof of purchase is required and shipping charges are the responsibility of the consumer.

### WARRANTY LIMITATIONS

This warranty does not include:

1. Damages which arise from negligence, misuse, or use

- not in accordance with this instruction manual.
2. Damage and wear arising from excessive stress.
  3. Replacement of fabric as a result of natural wear or fading of the fabric as a result of exposure to the sun or UV radiation.

The use of non-Harmony branded covers, inserts, toys, accessories or tightening devices is not approved by HJP. Their use could cause this child restraint to fail federal safety standards or perform worse in a crash. Their use automatically voids the HJP warranty.

### **LIMITATIONS OF DAMAGES**

The warranty and remedies as set forth above are exclusive and in lieu of all others, oral or written, expressed or implied. In no event will HJP or the retailer selling this product be liable to you for any damages, including incidental or consequential damages, or loss of use arising out of the use or inability to use this product.

**PLEASE REGISTER THIS CHILD RESTRAINT WITHIN 30 DAYS OF PURCHASE TO EXPEDITE WARRANTY CLAIMS AND TO VERIFY ORIGINAL DATE OF PURCHASE.**