

harmony[®] RealPotty

TRAINING TOILET FOR TODDLERS

FOR CHILDREN UP TO 23 KG (50 LBS.)

INSTRUCTION MANUAL

IMPORTANT! KEEP FOR FUTURE REFERENCE.

Please read the following instructions carefully.



IF YOU HAVE ANY PROBLEMS, PLEASE DO NOT RETURN THIS PRODUCT TO THE PLACE OF PURCHASE. PLEASE CONTACT HARMONY CUSTOMER SERVICE AT +44 (0) 1704 549881 OR AT WWW.HARMONYJUVENILE.COM

Adult assembly required.

Tools required: Phillips head screwdriver (not included).
2 "AAA" batteries (not included).

Maximum weight: 23 kg (50 lbs).

Child must be able to sit on and get off potty seat unassisted.
Keep small parts away from children.

WARNING:

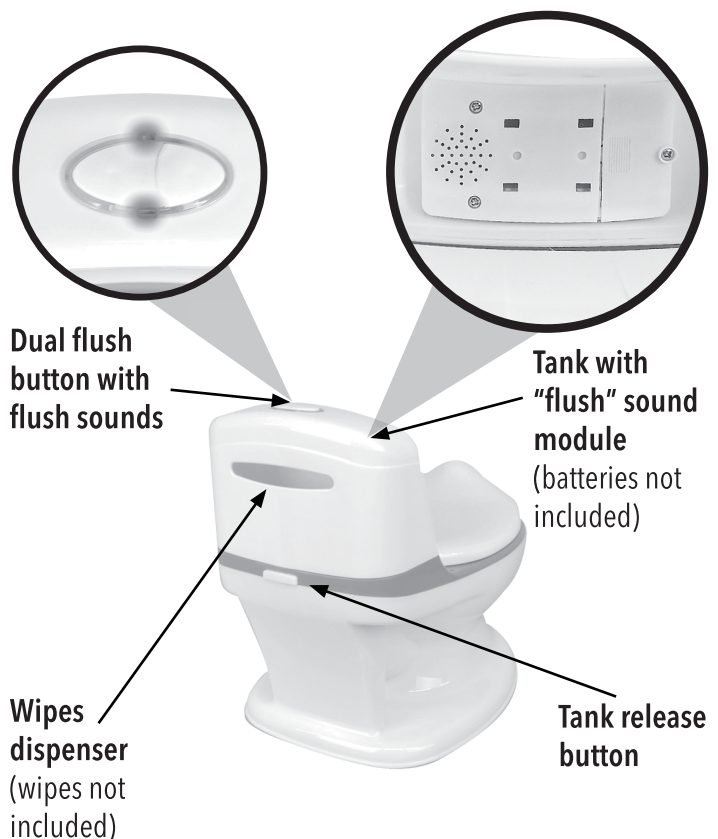
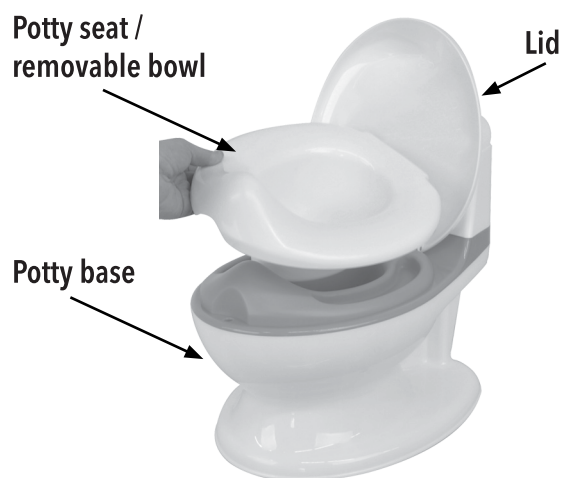
- NEVER leave child unattended.
- Use only on a flat surface.
- ENSURE product is level and stable.
- DO NOT use on elevated surface.
- NEVER use training seat on full size toilet.
- NEVER lift or carry product with child on it.
- This product is not a toy. DO NOT allow children to play with it.
- DO NOT use this product in any way other than it was intended or described in the warnings and instructions.
- Discontinue use of product if damaged, broken, or disassembled.

BATTERY WARNING:

- Batteries are to be inserted with correct polarity.
- Keep ALL batteries away from children.
- DO NOT mix old and new batteries.
- DO NOT mix alkaline, standard, or rechargeable batteries.

- Dispose of exhausted batteries according to instructions.
- DO NOT recharge non-rechargeable batteries.
- Remove rechargeable batteries before charging.
- Rechargeable batteries are only to be charged under adult supervision.
- DO NOT short circuit the supply terminals.
- Remove batteries when product is stored for long periods of time or when batteries are exhausted.

PARTS LIST



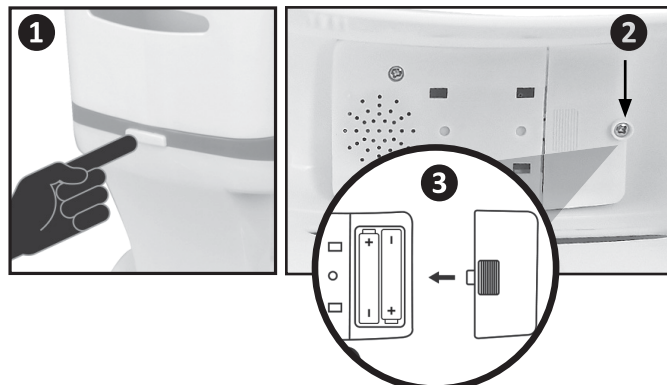
PREPARING POTTY FOR USE

- Remove content from box and discard all packaging.

! KEEP ALL PACKAGING AWAY FROM CHILDREN.

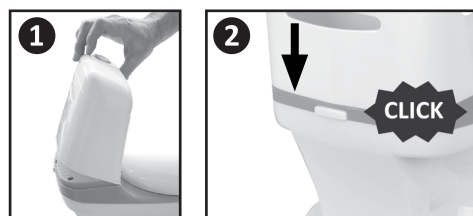
INSTALLING AND REMOVING BATTERIES

- Press tank release button and remove tank assembly ①.
- Using a Phillips head screwdriver (not included), remove battery cover ②.
- Install 2 "AAA" batteries (not included) in the correct polarity as indicated ③.
- Resecure battery cover and reinstall tank assembly.



INSTALLING AND REMOVING TANK ASSEMBLY

- Gently align the front of the tank assembly ①.
- Press and secure rear of tank assembly to lock into place ②.
- To remove tank assembly, press tank release button and lift.

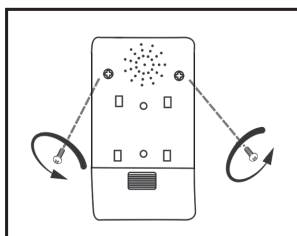


USING POTTY



CARE AND MAINTENANCE

- Wipe surface with a damp cloth or sponge, using mild soap and clean warm water. Towel dry.
- Check product before use. **DO NOT** use if any parts are missing, loose or damaged. Contact Harmony Juvenile Products for assistance.
- To remove sound module:



harmony®

To order other products, please visit our website www.harmonyjuvenile.com. Stay informed, ask questions, connect, follow, have a conversation and post photos and videos with us through the Social media channel you use:

Twitter @harmonyjuvenile

f www.facebook.com/HarmonyJuvenileProducts

in www.linkedin.com/company/harmony-juvenile-products

If you have an issue that requires action, please call Customer Service at +44 (0) 1704 549881, or email customerservice@harmonyjuvenile.com.