

# harmony®

## Urban **Deluxe**™

Microfold Pushchair

### **INSTRUCTION MANUAL**

This pushchair is designed for use by children who can sit upright unassisted (approximately 6 months of age) up to a maximum weight of 15 kg



max 15 kg

Complies with BS EN 1888-1:2018+A1:2022

**IMPORTANT - READ CAREFULLY AND KEEP  
FOR FUTURE REFERENCE**

Your child's safety may be affected if you do not follow these instructions.

## TABLE OF CONTENTS

Warnings .....	3
General warnings.....	3
Harness system warnings.....	5
Finger entrapment warnings .....	5
Usage warnings.....	5
Tipping warnings .....	6
Suffocation warnings .....	7
Certifications.....	7
Registration information .....	8
Parts list .....	9
Before using the pushchair.....	9
Unfolding pushchair.....	10
Brakes .....	10
Bumper bar.....	11
Front wheels .....	11
Rear wheels.....	12
Canopy.....	12
Harness system .....	12
Recline.....	14
Legrest.....	14
Installing cup holder (when applicable) .....	14
Folding pushchair .....	15
Replaceable parts .....	15
Care and maintenance .....	15
Warranty.....	17

## WARNINGS

**IMPORTANT - READ CAREFULLY AND KEEP FOR FUTURE REFERENCE.** Read all instructions **BEFORE** use of product. Your child's safety may be affected if you do not follow these instructions.

### GENERAL WARNINGS

#### **WARNING!**

**FAILURE TO PROPERLY READ, FOLLOW AND USE THESE INSTRUCTIONS AND THE PUSHCHAIR LABELS INCREASES THE RISK OF SERIOUS INJURY OR DEATH. FOR YOUR CHILD'S SAFETY, FOLLOW ALL LABELS ON THIS PUSHCHAIR AND IN THESE WRITTEN INSTRUCTIONS. DO NOT INSTALL OR USE THIS PUSHCHAIR UNTIL YOU READ AND UNDERSTAND THE WARNINGS AND ASSEMBLY INSTRUCTIONS.**

#### **WARNING!**

**NEVER LEAVE A CHILD UNATTENDED. NEVER** leave children alone in this pushchair under any circumstance. **ALWAYS** keep child in view while in pushchair.

#### **WARNING!**

**PLACING PARCELS, ACCESSORIES OR OTHER ITEMS ON THE PUSHCHAIR OR ANY OF ITS PARTS (INCLUDING HANGING ON THE HANDLEBAR), MAY CAUSE THE UNIT TO BECOME UNSTABLE AND MAY LEAD TO SERIOUS INJURY OR DEATH.**

- **KEEP INSTRUCTIONS FOR FUTURE USE.**

**! WARNING** Never leave the child unattended.

**! WARNING** Ensure that all the locking devices are engaged before use.

**! WARNING** To avoid injury ensure that the child is kept away when unfolding and folding this product.

**! WARNING** Do not let the child play with this product.

**! WARNING** This seat unit is not suitable for children under 6 months.

- ! WARNING** Always use the restraint system.
- ! WARNING** Check that the pushchair is correctly engaged before use.
- ! WARNING** This product is not suitable for running or skating.
- ! WARNING** Any load attached to the handle and/or on the back of the backrest and/or on the sides of the vehicle will affect the stability of the vehicle.
- ! WARNING** Parking device shall be engaged when placing and removing the children.
- ! WARNING** Only replacement parts supplied or recommended by Harmony Juvenile Products shall be used.
- ! WARNING** Accessories which are not approved by the manufacturer shall **NOT** be used.
- **REMOVE** packing materials and polybags, and dispose of them before assembly. Plastic bags can cause suffocation. Keep plastic bags away from children.
- Adult assembly required. **DO NOT** use this pushchair without properly assembling it.
- This product must only be used by an adult.
- **DO NOT EXCEED THE MANUFACTURER'S RECOMMENDED LOAD OF 15 KG (33 LBS)** as this pushchair can become unstable and cause serious injuries.
- **DO NOT** allow children to play with this pushchair.
- **PARTS OF THIS PUSHCHAIR COULD BECOME HOT ENOUGH TO BURN THE CHILD IF LEFT IN THE SUN.** Contact with these parts can injure your child. **ALWAYS** touch the surface of any metal or plastic part before putting your child in the pushchair.
- **DO NOT** use this pushchair if it is damaged in any way or has missing parts.
- **DO NOT** tamper with or modify the pushchair for any reason.
- **DO NOT, EXCEPT AS DESCRIBED IN THESE INSTRUCTIONS, MODIFY YOUR PUSHCHAIR, DISASSEMBLE ANY PART OR CHANGE THE WAY THE HARNESS BELTS ARE USED.** This includes adding any parts or accessories by other manufacturers as non-tested accessories can affect the safety of the pushchair.
- It is recommended to routinely inspect, maintain, clean and/or wash your pushchair.

- In some climates mold and mildew can affect the fabric. To avoid this, **DO NOT** fold the pushchair when it is wet. Leave it open in a ventilated area until completely dry.
- **ALWAYS** store the pushchair in a dry place.
- When storing the pushchair, **NEVER** place other items on top of it.
- **DO NOT** use the pushchair on the beach.
- When adjusting any part of this pushchair, the child should be clear of all moving parts while making the adjustments.

## HARNESSE SYSTEM WARNINGS

### **WARNING!**

**AVOID SERIOUS INJURY TO CHILD FROM FALLING OR SLIDING OUT. ALWAYS USE THE CHILD RESTRAINT SYSTEM.**

- Children should be **HARNESSED** every time you use this pushchair.
- Snugly adjust harness around child.

## FINGER ENTRAPMENT WARNINGS

- **TO AVOID INJURIES FROM FINGER ENTRAPMENT**, keep child away from this product when unfolding and folding it.
- **ALWAYS** keep hands and fingers away from moving parts to prevent finger entrapment and pinching injuries.

## USAGE WARNINGS

- **ENSURE** that pushchair is completely **LOCKED IN THE OPEN POSITION** prior to use.
- **ALWAYS** use the brakes when pushchair is stopped. **ENSURE** the brakes are fully engaged before releasing the pushchair.
- **NEVER** use the pushchair on stairs or escalators. Incorrect use of a pushchair is the most common mistake people make which can lead to serious injuries. Use your pushchair in the way it was intended for use, and be extra careful when going up or down (e.g. a curve), or on other uneven surfaces or in unstable conditions.

- **NEVER** run or inline skate with your pushchair. The pushchair should be used at **WALKING SPEED**. The pushchair **CANNOT** be used at higher speeds while jogging, skating, etc.
- **NEVER** allow a child to fold, unfold or adjust the pushchair to prevent injuries.
- This pushchair is for use with **ONE CHILD AT A TIME**.
- **NEVER** place more than 2 kg (4.4 lbs) in the storage basket to prevent hazardous or unstable conditions.
- **NEVER** place a child in or allow a child to sit in the storage basket.
- **NEVER** place more than 1 kg (2.2 lbs) in the cup holder.
- The tyres may leave black marks on some floors (particularly on smooth floors such as parquet, synthetic laminates, linoleum, etc.).
- **DO NOT** use excessive force when folding the pushchair. If you are having problems, fully open the pushchair and repeat the folding procedure.
- **ALWAYS** let wheels down as gently as possible when mounting and dismounting curbs to avoid damage. **NEVER** bump the pushchair over these or similar obstacles.
- **ALWAYS** fold the pushchair when going up or down stairs.
- **ENSURE** brakes are engaged when placing and removing children from the pushchair.

## TIPPING WARNINGS

### **WARNING!**

**FAILURE TO FOLLOW THE FOLLOWING WARNINGS CAN CAUSE THE PUSHCHAIR TO TIP OVER AND COULD RESULT IN SERIOUS INJURIES TO YOUR CHILD.**

- **NEVER** allow children to climb into the pushchair unassisted. Pushchair may tip over and injure child. Lift a child in and out of the pushchair.
- **DO NOT** allow a child to stand on the footrest.
- **NEVER** allow children to hang onto the pushchair.
- **NEVER** place anything on the canopy as this can cause the canopy to collapse and seriously injure your child.
- **NEVER** allow children to stand on the basket.

- **NEVER** place/hang purses, bags, parcels, etc. or any accessory on the handlebar or any other pushchair parts as it could cause the system to become unstable.
- **DO NOT** overload the rear fabric canopy pouch. Maximum weight 0.22 kg (0.5 lb).

## SUFFOCATION WARNINGS

### **WARNING!**

**TO AVOID SUFFOCATION, ALWAYS USE THE HARNESS TO SECURE THE CHILD IN THE CARRIAGE.**

### **WARNING!**

**NEVER ADD ANY ACCESSORIES INCLUDING A MATTRESS / CUSHION, BLANKET, PILLOW, ETC.**

### **WARNING!**

**DO NOT PLACE ITEMS WITH A STRING AROUND CHILD'S NECK, SUSPEND STRING FROM THIS PRODUCT, OR ATTACH STRINGS TO TOYS.**

## CERTIFICATIONS

Harmony Juvenile Products certifies the compliance of this pushchair to *BS EN 1888-1:2018+A1:2022*.

Harmony Juvenile Products has also validated compliance through independent laboratory testing.

Imported by Harmony Juvenile Products, 10 Beach Priory Gdns., Southport, UK, PR8 1RT.

## REGISTRATION INFORMATION

**REGISTER YOUR PUSHCHAIR TODAY!** You must register this pushchair to be eligible to receive replacement parts while under warranty.

The model number and manufacturing date can be found on the serial sticker on the pushchair frame.

**Visit <http://www.harmonyjuvenile.com/register> to register your pushchair online.**

For any questions you may have, or to make a change of address or contact information please visit us online at [www.harmonyjuvenile.com](http://www.harmonyjuvenile.com).

## PARTS LIST

- A. Handlebar
- B. Safety button
- C. Fold button
- D. Canopy
- E. Peek-a-boo window
- F. Backrest
- G. Plastic lock
- H. Recline adjustment belt
- I. Bumper bar
- J. 5-point harness system (shoulder straps & pads, lap strap, buckles, clips)
- K. Cup holder (when applicable)
- L. Legrest
- M. Footrest
- N. Storage basket
- O. Brake lever
- P. Rear wheels (x2)
- Q. Front wheels (x2)
- R. Travel handle (under legrest)



### TO PURCHASE REPLACEMENT PARTS:

In the United Kingdom,  
please contact us at  
[customerservice@harmonyjuvenile.com](mailto:customerservice@harmonyjuvenile.com)



**IF ANY PARTS ARE MISSING, DO NOT RETURN THIS PRODUCT TO THE PLACE OF PURCHASE. PLEASE CONTACT HARMONY JUVENILE PRODUCTS CUSTOMER SERVICE AT [CUSTOMERSERVICE@HARMONYJUVENILE.COM](mailto:CUSTOMERSERVICE@HARMONYJUVENILE.COM).**

## BEFORE USING THE PUSHCHAIR

### ENSURE THE FOLLOWING:

- ✓ THE PUSHCHAIR IS OPEN AND LOCKED INTO PLACE.
- ✓ THE BRAKES ARE ENGAGED AND WORKING PROPERLY.
- ✓ THE HARNESS IS SECURED AND WORKING PROPERLY.
- ✓ THE SEAT FABRIC IS PROPERLY INSTALLED AND FASTENED.

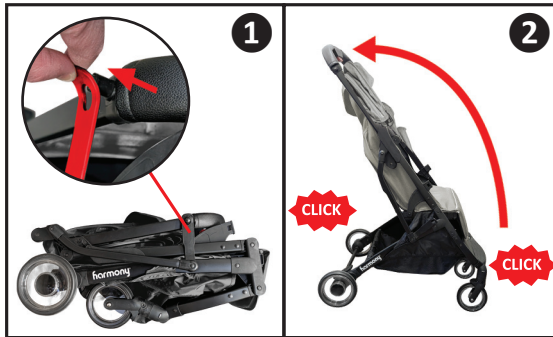
## UNFOLDING PUSHCHAIR

1. Unhook plastic lock on the side of the frame **1**. Lift pushchair handlebar and pull up to unfold pushchair.

**! WARNING: DO NOT** force the pushchair to open.

2. Pull up pushchair until it is fully opened **2**. An audible 'click' should be heard to ensure it is locked into position.

**! WARNING: ENSURE** the pushchair is fully opened and locked by gently pushing/pulling on the handlebar.



## BRAKES

### **! WARNING!**

**ENSURE THE BRAKES HAVE BEEN FULLY ENGAGED BEFORE RELEASING THE PUSHCHAIR. ALWAYS APPLY THE BRAKES WHEN PUTTING IN, POSITIONING OR TAKING OUT YOUR CHILD.**

Step down on the brake lever to lock rear wheels. Lift up lever to unlock rear wheels.

**! WARNING:** Apply the brakes each time you park the pushchair.



## BUMPER BAR

**! ALWAYS** secure child with harness system. The bumper bar **IS NOT** a restraint device.

Attach the front bumper by aligning anchors with the slots at the ends of the armrests **1**.

**! WARNING: NEVER** use the bumper bar to lift the pushchair up with the child sitting in it.

To swivel the bumper bar, press release tab on one side of the bumper bar and pull from the pushchair **2**.



## FRONT WHEELS

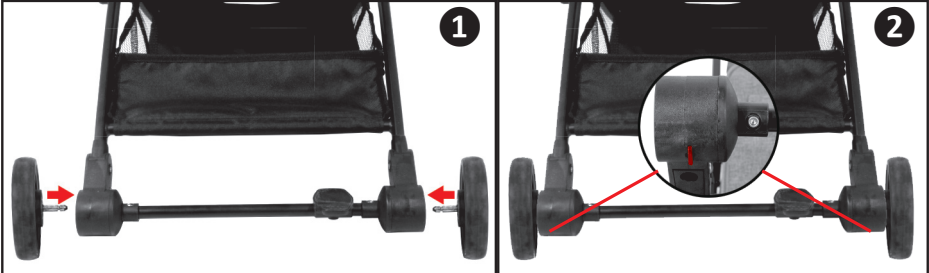
Install front wheels into slots as shown (x2) **1**. A 'click' should be heard to ensure wheel is fully installed **2**.

Press release button to remove each wheel **3**.



## REAR WHEELS

Install each rear wheel (x2) to its corresponding hole on rear locking bar as shown **1**. Press release button to remove each wheel **2**.



## CANOPY

Open the canopy by pulling the canopy out **1**.

Unfasten zipper to extend canopy **2**.

To use sun visor, pull out from front of canopy.

To open canopy vent section, lift up flap as shown **3**.

Pull back canopy to close as shown **4**.



## HARNESS SYSTEM

**⚠ WARNING!**

**FAILURE TO FOLLOW THESE INSTRUCTIONS COULD RESULT IN SERIOUS INJURY OR DEATH.**

## **⚠ WARNING!**

**ENSURE HARNESS SYSTEM IS SECURE BY PULLING ON IT. CHECK FREQUENTLY. ALWAYS ADJUST HARNESS SNUGLY AROUND YOUR CHILD.**

## **⚠ WARNING!**

**ALWAYS USE THE HARNESS HEIGHT POSITION THAT IS JUST ABOVE THE CHILD'S SHOULDERS.**

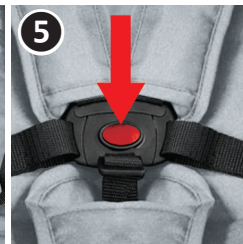
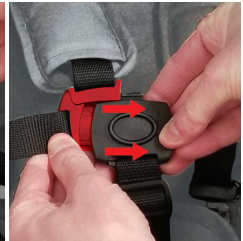
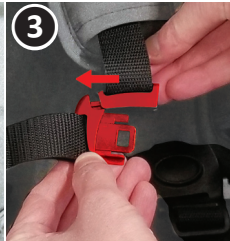
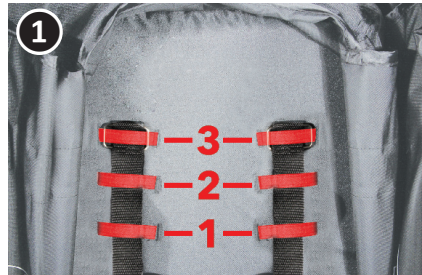
This pushchair has **THREE (3)** harness height positions **1**. Place child in the pushchair seat. Slide the harness straps through the loops in the position closest to the child's shoulder level as shown **2**.

**ALWAYS** insert both harness straps into the same loop position.

With the crotch strap between the child's legs, secure both buckles as shown **3**.

**ADJUST** the harness snugly around your child. Slide the adjusters on both the waist and shoulder straps to tighten or loosen the harness system **4**.

To release, press center button **5**.



## **⚠ WARNING!**

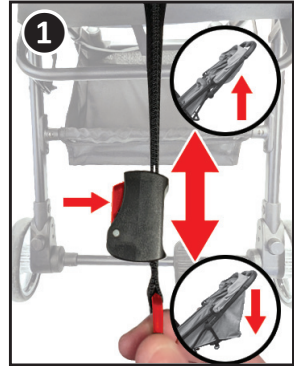
**AVOID SERIOUS INJURY FROM FALLING OR SLIDING OUT. ALWAYS USE THE 5-POINT HARNESS SYSTEM PROVIDED.**

## RECLINE

Locate the recline adjustment belt behind the backrest. Press the backrest adjustment button and pull it backward to recline ①.

Hold ring, press button and push forward to raise backrest.

**TIP:** To raise the seat to the most upright position, push backrest forward with your hand and tighten.



## LEGREST

To raise legrest, lift up and pull out travel handle ①.

To lower legrest, push travel handle back under legrest.

**! WARNING:** The legrest should **NEVER** be used as a step when getting into/out of the pushchair.



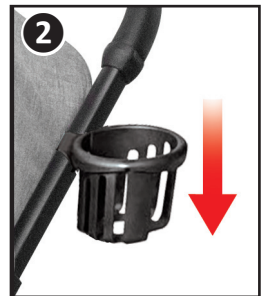
## INSTALLING CUP HOLDER (WHEN APPLICABLE)

### TO INSTALL:

Slide cup holder into place over cup holder clip ① ② on either side below pushchair handle until locked in place.

### TO REMOVE:

Pull cup holder up and outward.



**! WARNING:** To avoid burns, **DO NOT** use with hot liquids.

**! NEVER** place more than 1 kg (2.2 lbs) in the cup holder.

## FOLDING PUSHCHAIR

### **⚠ WARNING!**

**NEVER FOLD PUSHCHAIR WITH A CHILD INSIDE.**

**ENSURE** canopy is closed, backrest is raised, and legrest is lowered. Engage the brakes. While holding in (squeezing) safety lock button ①, press fold button ② on pushchair handle and push forward to fold. When folded, hook plastic lock back onto the side frame ③. For easy portability, use travel handle by lifting up legrest and pulling out travel handle ④.



## REPLACEABLE PARTS

- Harness shoulder pads
- Storage basket
- Front wheels
- Rear wheels
- Bumper bar
- Cup holder

## CARE AND MAINTENANCE

### **CLEANING THE CHASSIS:**

- The pushchair must be maintained regularly to provide full satisfaction. We advise you to regularly check mechanical parts for cleaning, if necessary.
- Wipe the frame with a clean cloth. Clean and dry the frame thoroughly every time the pushchair has been in muddy and sandy areas.
- Do not grease or oil.
- The pushchair may not work properly if not regularly maintained.
- Do not force it if the pushchair is difficult to fold or unfold. If difficulties persist, contact Harmony Customer Service at [customerservice@harmonyjuvenile.com](mailto:customerservice@harmonyjuvenile.com).

## **CLEANING THE FABRIC:**

- Use a sponge and mild soap. Do not use detergent.

Check your pushchair from time to time for loose screws, rivets, worn parts, torn material or stitching. Tighten, replace or repair parts as needed. Use only Harmony replacements parts.

If wheels make noise during use - dirt, sand or small objects might be interfering with the wheel. Remove wheel and wipe all parts with a damp cloth. Remove any dirt or small objects from inside wheel assembly. If wheel continues to make noise, use a light oil lubricant in the assembly.

When using your pushchair on any surface other than dry pavement (e.g. dirt roads, beach, etc.), completely clean your pushchair to remove dirt, sand, salt, etc. from the wheel assemblies.

If pushchair becomes wet, allow the fabric to dry prior to next use or storage.

## WARRANTY

This product was manufactured by **Harmony Juvenile Products® (HJP)**. HJP warrants this product to the original retail purchaser as follows:

### **LIMITED 1-YEAR WARRANTY**

This product is warranted against defective materials and workmanship for one year from the date of original purchase. An original receipt and product registration are required to validate your warranty. HJP will, at its option, provide replacement parts for this product or replace this product. HJP reserves the right to discontinue or change fabrics, parts, models or products, or to make substitutions.

To make a claim under this warranty, you must contact HJP Customer Service at [customerservice@harmonyjuvenile.com](mailto:customerservice@harmonyjuvenile.com).

Proof of purchase is required and shipping charges are the responsibility of the consumer.

### **WARRANTY LIMITATIONS**

This warranty covers manufacture defects only. This warranty does not include damages which arise from regular usage, negligence, misuse, or use not in accordance with this instruction manual.

### **LIMITATIONS OF DAMAGES**

The warranty and remedies as set forth above are exclusive and in lieu of all others, oral or written, expressed or implied. In no event will HJP or the retailer selling this product be liable to you for any damages, including incidental or consequential damages, or loss of use arising out of the use or inability to use this product.

**PLEASE REGISTER THIS PRODUCT WITHIN 30 DAYS OF PURCHASE TO EXPEDITE WARRANTY CLAIMS AND TO VERIFY ORIGINAL DATE OF PURCHASE.**

## NOTES

## NOTES

